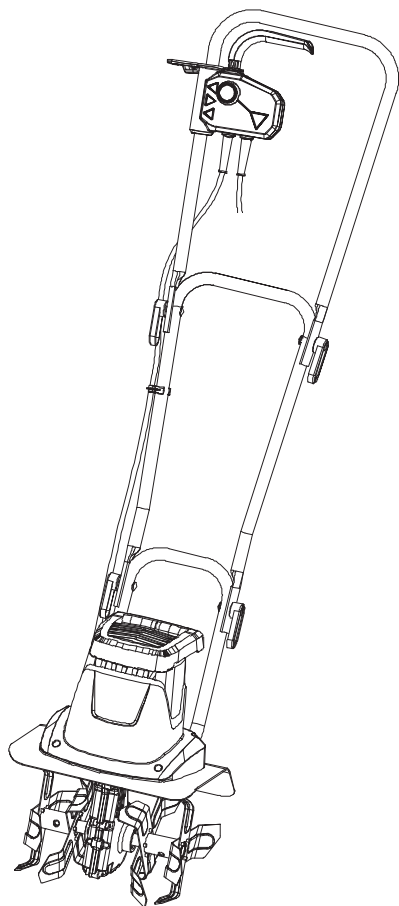


Electric Tiller 800W



FPT800

EAN: 3663602627241

WARNING: Read the instructions before using the product!



Let's get started...

These instructions are for your safety. Please read through them thoroughly before use and retain them for future reference.



Getting **started**...

02

Safety information 03Your **product** 11**Before** you **start** 12

In more **detail**...

17

Product functions 18**Operation** 19**Care** and **maintenance** 22**Trouble** shooting 26**Recycling** and **disposal** 27**Guarantee** 28Technical **specifications** 29**EC** declaration **of** conformity 31

Safety warnings

**IMPORTANT
READ CAREFULLY BEFORE USE.
KEEP FOR FUTURE REFERENCE.**

Training

1. Read the instructions carefully. Be familiar with the controls and the proper use of the product.
2. Never allow children or people unfamiliar with these instructions to use the product. Local regulations can restrict the age of the operator.
3. Never work while people, especially children, or pets are nearby.
4. Keep in mind that the operator or user is responsible for accidents or hazards occurring to other people or their property.

Preparation

1. Always wear substantial footwear and long trousers while working. Do not operate the product when barefoot or wearing open sandals.
2. Thoroughly inspect the area where the product is to be used and remove all objects which can be thrown by the product.
3. Before using, always visually inspect to see that the cutting devices, cutting device bolts and cutter assembly are not worn or damaged. Replace worn or damaged cutting devices and bolts in sets to preserve balance.
4. On multi-bladed machines, take care as rotating one cutting device can cause other cutting devices to rotate.

5. CAUTION! Do not touch rotating cutting device.

Operation

1. Work only in daylight or in good artificial light.
2. Always be sure of your footing on slopes.
3. Walk, never run with the product.
4. Work across the slopes, never up and down.
5. Exercise extreme caution when changing direction on slopes.
6. Do not work on excessively steep slopes.
7. Use extreme caution when reversing or pulling the product towards you.
8. Start the motor carefully according to manufacturer instructions and with feet well away from the tool(s).
9. Do not put your hands or feet near or under rotating parts.
10. Never pick up or carry a product while the motor is running.
11. Never operate the appliance with defective guards or shields, or without safety devices, for example deflectors and/or catchers in place.
12. Stop the machine, and disconnect it from the power supply. Make sure that all moving parts have come to a complete stop
 - before clearing blockages or unclogging chute,
 - before checking, cleaning or working on the machine,
 - after striking a foreign object. Inspect the machine for damage and make repairs before restarting and operating the machine;
 - whenever you leave the machine,
13. If the machine starts to vibrate abnormally (check

immediately)

- inspect for damage,
- check for and tighten any loose parts.
- replace or repair any damaged parts,

Maintenance and storage

1. Follow the maintenance and repair instructions for this product. Never carry out any modifications of the product. Information about maintenance and repair is provided in this user manual.
2. Keep all nuts, bolts and screws tight to ensure the product is in safe working condition.
3. Replace worn or damaged parts for safety.
4. Make sure that air circulation is adequate and good. The product must be easily accessible from all sides.
5. During transportation of the product, the operator must control the handles by two hands.

Vibration and noise reduction

To reduce the impact of noise and vibration emission, limit the time of operation, use low-vibration and low-noise operating modes as well as wear personal protective equipment.

Take the following points into account to minimise the vibration and noise exposure risks:

1. Only use the product as intended by its design and these instructions.
2. Ensure that the product is in good condition and well maintained.
3. Use correct cutting device for the product and ensure they in good condition.

4. Keep tight grip on the handles/gripping surface.
5. Maintain this product in accordance with these instructions and keep it well lubricated (where appropriate).
6. Plan your work schedule to spread any high vibration tool use across a longer period of time.

Emergency

Familiarise yourself with the use of this product by means of this instruction manual. Memorise the safety directions and follow them to the letter. This will help to prevent risks and hazards.

1. Always be alert when using this product, so that you can recognise and handle risks early. Fast intervention can prevent serious injury and damage to property.
2. Switch off and disconnect from the power supply if there are malfunctions. Have the product checked by a qualified professional and repaired, if necessary, before you operate it again.

Residual risks

Even if you are operating this product in accordance with all the safety requirements, potential risks of injury and damage remain. The following dangers can arise in connection with the structure and design of this product:

1. Health defects resulting from vibration emission if the product is being used over long periods of time or not adequately managed and properly maintained.
2. Injuries and damage to property due to broken

application tools or the sudden impact of hidden objects during use.

3. Danger of injury and property damage caused by flying objects.



WARNING! This product produces an electromagnetic field during operation! This field may under some circumstances interfere with active or passive medical implants! To reduce the risk of serious or fatal injury, we recommend persons with medical implants to consult their doctor and the medical implant manufacturer before operating this product!

Symbol explanation

On the product, the rating label and within these instructions you will find among others the following symbols and abbreviations. Familiarise yourself with them to reduce hazards like personal injuries and damage to property.

V~	Volt, (alternating voltage)
Hz	Hertz
W	Watt
/min or min⁻¹	Per minute
mm	Millimetre
kg	Kilogram
dB(A)	Decibel (A-rated)
m/s²	Metres per second squared



Lock / to tighten or secure.



Unlock / to loosen.



Note / Remark.



Caution / Warning.



Read the instruction manual.



Wear hearing protection.



Wear eye protection.



Wear a dust mask.



Wear protective gloves.

Symbol explanation



Wear protective, slip-resistant footwear.



Wear tight-fitted protective clothes.

yyWxx Manufacturing date code; year of manufacturing (20yy) and week of manufacturing (Wxx)



Switch the product off and disconnect it from the power supply before assembly, cleaning, adjustments, maintenance, storage and transportation.



Do not expose the product to rain or wet conditions (moisture).



Work across the slopes, never up and down.



Inspect the area where the product is to be used and remove all objects which can be thrown by the product. If objects are hidden while operating stop the engine and remove the object.



Objects thrown by the product could hit the user or other bystanders. Always ensure that other people and pets remain at a safe distance from the product when it is in operation. In general, children must not come near the area where the product is.



Keep supply flexible cord away from cutting device.



Cutting device continues to rotate after the product is switched off. Wait until all machine components have completely stopped before touching the product.

Symbol explanation



Pay special attention when working on the cutting device!



Keep hands and feet away from sharp rotating parts – danger of injury! When cleaning, repairing, or inspecting, make certain the working tool and all moving parts have stopped.



Guaranteed sound power level value in dB.



This product is of protection class II. That means it is equipped with enhanced or double insulation.



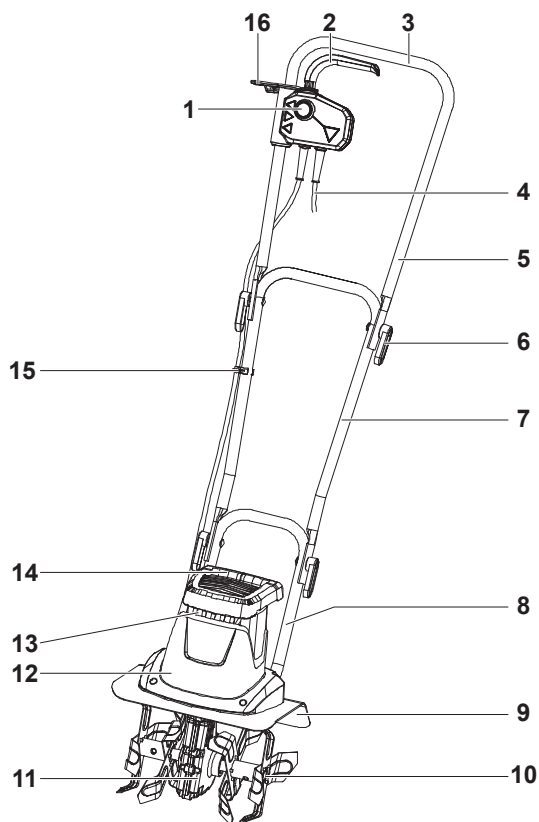
The product complies with the applicable European directives and an evaluation method of conformity for these directives was done.



WEEE symbol. Waste electrical products should not be disposed of with household waste. Please recycle where facilities exist. Check with your Local Authority or local store for recycling advice.

FPT800: FP-OPP, T-Tiller

Your product



- | | |
|-------------------------|---------------------------|
| 1. Lock-off button | 8. Lower handle bar |
| 2. On/off switch | 9. Guard |
| 3. Main Handle | 10. Tines |
| 4. Power cord with plug | 11. Gearbox |
| 5. Upper handle bar | 12. Motor |
| 6. Mounting set (x4) | 13. Air vents |
| a. Bolt* | 14. Transportation handle |
| b. Lever* | 15. Cord clip |
| c. Washer* | 16. Cord retainer |
| 7. Middle handle bar | |



NOTE: Parts marked with * are not shown in this overview. Please refer to the respective section in the instruction manual.

Unpacking

1. Unpack all parts and lay them on a flat, stable surface.
2. Remove all packing materials and shipping devices, if applicable.
3. Make sure the delivery contents are complete and free of any damage. If you find that parts are missing or show damage do not use the product but contact your dealer. Using an incomplete or damaged product represents a hazard to people and property.
4. Ensure that you have all the accessories and tools needed for assembly and operation. This also includes suitable personal protective equipment.



WARNING! The product and the packaging are not children's toys! Children must not play with plastic bags, sheets and small parts! There is a danger of choking and suffocation!

You will need

(items not supplied)

Suitable personal protective equipment
Suitable extension cord for outdoor use

(items supplied)

Assembly



WARNING! The product must be fully assembled before operation! Do not use a product that is only partly assembled or assembled with damaged parts!



Follow the assembly instructions step-by-step and use the pictures provided as a visual guide to easily assemble the product!

Do not connect the product to power supply before it is completely assembled!



NOTE: Take care of small parts that are removed during assembly or when making adjustments. Keep them secure to avoid loss.

Handle bar

1. Attach the cord clip (15) on the middle handle bar (7) (Fig. 1).

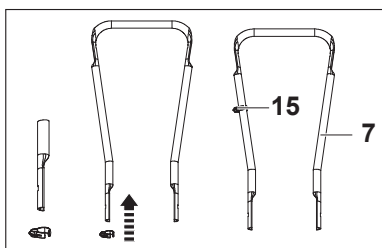


Fig. 1

2. Remove the bolts (6a) from the levers (6b) & washers (6c) and keep them handy.
3. Align the holes in the middle handle bar (7) with the holes in the lower handle bar (8). Secure the connection with the bolts (6a) and levers (6b) & washers (6c) (Fig. 2).

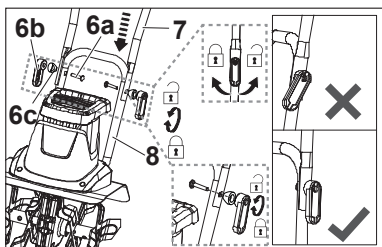


Fig. 2



WARNING! Ensure that the lever aligns with the handle bar.

4. Attach the cord retainer (16) on the upper handle bar (5) (Fig. 3).

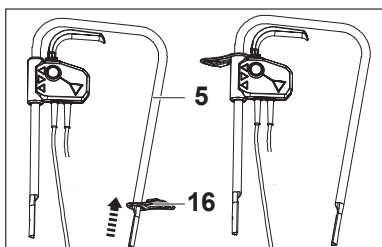


Fig. 3

- Align the holes in the upper handle bar (5) with the holes in the middle handle bar (7). Make sure the on/off switch (2) is on the right side of the handle. Secure the connection with the bolts (6a) and levers (6b) & washers (6c) (Fig. 4).

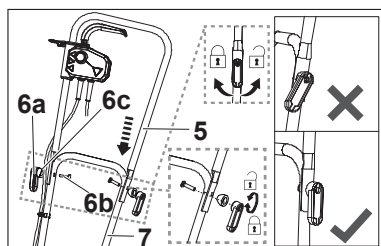


Fig. 4

- Fix the cord in the cord clip (15) (Fig. 5).

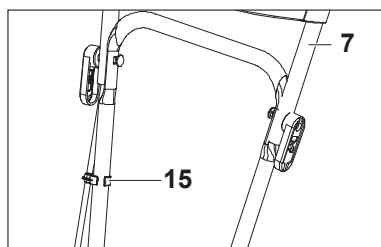


Fig. 5

Connection to the power supply (for UK only)



WARNING! Make sure the levers (6b) are properly tightened before using the product.



WARNING! Always use a residual current supply (RCD) protected supply. If an extension cord is used, make sure the extension cord is specifically designed for outdoor use and not lighter than H05VV-F or H05RN-F, 2x1.0mm² and max. 75m

- Make sure the on/off switch (2) is in its off position.
- Correct the power plug to a suitable power source.
- Now your product is ready for use.

Connection to power supply (not for UK)

For safety reasons the product is equipped with a short power cord (4). Do not connect the product directly to the power supply using this power cord. A proper extension cord is required for operation. Observe the technical requirements for this product when purchasing an extension cord.



WARNING! For your safety, it is required that the plug attached to this product is always connected to an extension cord! The extension cord must be suitable for outdoor use with sockets protected against water splashing! Ensure the extension cord is of the proper size and type for your product ($\geq 1.0 \text{ mm}^2$)! Always use a residual current supply (RCD) protected supply

1. Double the extension cord back, about 30 cm from the end and lead the loop through the cord strain relieve (15) and hang the loop over the hook. Gently tug on the cord to ensure that it is firmly secured (Figs. 6, 7).

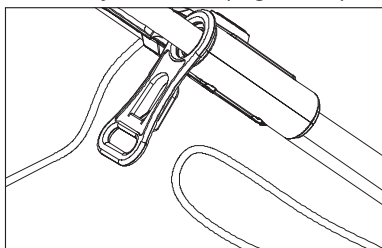


Fig. 6

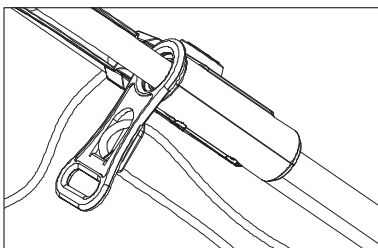


Fig. 7

2. Connect the power cord (4) to the socket of the extension cord (Fig. 8).

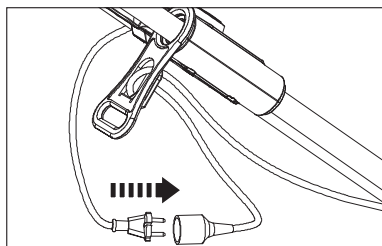


Fig. 8

3. Make sure the on/off switch (2) is not squeezed.
4. Connect the plug of extension cord into a suitable socket.



WARNING! Check the voltage! The voltage must comply with the information on the rating label!

If using an extension cord it must be suitable for outdoor use with sockets protected against water splashing.

Ensure the extension cord is of the proper size and type for your product:

- 1.5 mm² for up to 60 m
- 2.5 mm² for up to 100 m

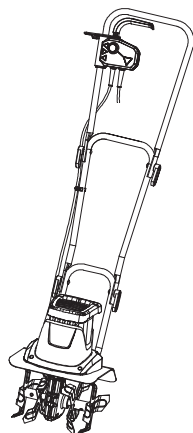
5. Your product is now ready to be used.



In more detail...

Product functions	18
Operation	19
Care and maintenance	22
Trouble shooting	26
Recycling and disposal	27
Guarantee	28
Technical specifications	29
EC declaration of conformity	31

In more detail...



Intended use

This Electric Tiller FPT800 is designated with a rated power input of 800 Watts.

This product is intended for loosening and working up the soil in a garden and for tilling coarse soil for mixing in fertilizer, peat and compost in domestic areas. This product may not be used to till extremely dry or wet soil.

The use of this product in case of rain or humid environment is prohibited.

For safety reasons it is essential to read the entire instruction manual before first operation and to observe all the instructions therein.

This product is intended for private domestic use only, not for any commercial trade use. It must not be used for any purposes other than those described.

Switching on/off

1. Press the lock-off button (1) and hold it in position (Fig. 9, step 1).
2. Squeeze the on/off switch (2) to switch the product on (Fig. 9, step 2), release the lock-off button (1) afterwards.
3. Release the on/off switch (2) to switch the product off.

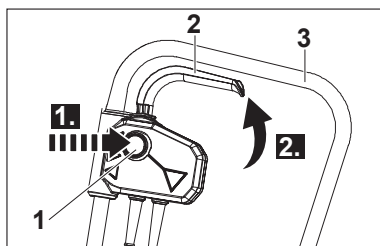


Fig. 9

General operation

1. Check the product, its power cord and plug as well as accessories for damage before each use. Do not use the product if it is damaged or shows wear.
2. Double check that the accessories and attachments are properly fixed.
3. Always hold the product on its handle. Keep the handle dry to ensure safe support.
4. Ensure that the air vents are always unobstructed and clear. Clean them if necessary with a soft brush. Blocked air vents may lead to overheating and damage the product.
5. Switch the product off immediately if you are disturbed while working by other people entering the working area. Always let the product come to complete stop before averting.
6. Do not overwork yourself. Take regular breaks to ensure you can concentrate on the work and have full control over the product.



WARNING!

In some countries regulations define at what time of the day and on what special days products are allowed to be used and what restrictions apply! Ask your community for detailed information and observe the regulations in order to preserve a peaceful neighbourhood and avoid committing administrative offences!

Tilling

1. Make sure that the working area is clear of stones, sticks, wire or other objects that could damage the product or its engine.
2. Do not till very wet soil because it tends to stick to the working tool preventing the proper rotation, and it could also cause you to slip and fall.
3. Always maintain a firm grip on the product. For better guidance apply light pressure to the handles (3) (Fig. 10).



WARNING! Never carry this product as the person in Fig. 11 is doing. If you do, and the tines engage, you could suffer serious injury.

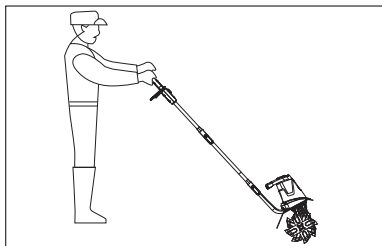


Fig. 10



Fig. 11

4. Do not try to till too deeply or force the product into soil that is extremely hard or resistant.
5. Walk the product through the soil at a normal pace and in as straight a line as possible.
6. Till in slight overlapping rows. The most effective pattern for tilling soils is moving the product up and down in verticals lines, then move the product in horizontal lines from left to right (Fig. 12). This will keep the rows even and ensures that all the ground is tilled without missing any spots.

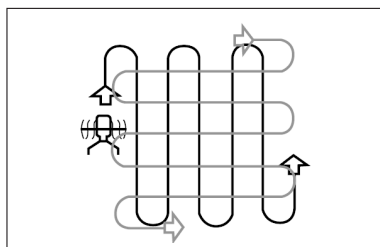


Fig. 12

7. Pay special attention when changing direction.



WARNING! Stop the motor, if the product strikes a foreign object! Switch the product off, disconnect it from the power supply and let it cool down. Inspect the product thoroughly for damage! Have any damage repaired before restarting!

Extensive vibration of the product during operation is an indication of damage! Stop the motor. The product should be promptly inspected and repaired!

After use

1. Switch the product off, disconnect it from the power supply and let it cool down.
2. Check, clean and store the product as described below.

In more detail...

The golden rules for care



WARNING! Always switch the product off, disconnect the product from the power supply and let the product cool down before performing inspection, maintenance and cleaning work!

- ① Keep the product clean. Remove debris from it after each use and before storage.
- ② Regular and proper cleaning will help ensure safe use and prolong the life of the product.
- ③ Inspect the product before each use for worn and damaged parts. Do not operate it if you find broken and worn parts.



WARNING! Only perform repairs and maintenance work according to these instructions! All further works must be performed by a qualified specialist!

General cleaning

1. Clean the product with a dry cloth. Use a brush for areas that are hard to reach.
2. In particular clean the air vents (13) after every use with a cloth and brush.
3. Remove stubborn dirt with high pressure air (max. 3 bar).



NOTE: Do not use chemical, alkaline, abrasive or other aggressive detergents or disinfectants to clean this product as they might be harmful to its surfaces.

4. Check for worn or damaged parts. Replace worn parts as necessary or contact an authorised service centre for repair before using the product again.

Underbody and working tool



WARNING! Wear safety gloves when working on the working tool and close to it! Use proper tools to remove debris, e. g. a wooden stick! Never use your bare hands!



1. Keep the underbody and tines (10) clean and free of debris. Remove soil from the working tool with a proper brush or tool.
2. All nuts and bolts must be checked periodically for tightness before operation. After prolonged use, especially in sandy soil conditions, the working tool will become worn and lose some of the original shape. Tilling efficiently will be reduced and the working tool should be replaced.
3. Have worn or damaged working tool replaced with new ones of the same type by a qualified specialist.
4. To prolong the life span of working tool and the product it is recommended that the tines (10) are lubricated after each use.

Maintenance

Before and after each use, check the product and accessories (or attachments) for wear and damage. If required, exchange them for new ones as described in this instruction manual. Observe the technical requirements.

Power cord

If the power cord is damaged, it must be replaced by the manufacturer, its service agent or similarly qualified persons in order to avoid a safety hazard.

Spare parts/Replacement parts

The following parts of this product may be replaced by the consumer. Spare parts are available at an authorised dealer or through our customer service.

Description	Model no. or Specification
Tine	8421-560101
Bolt	8422-560101

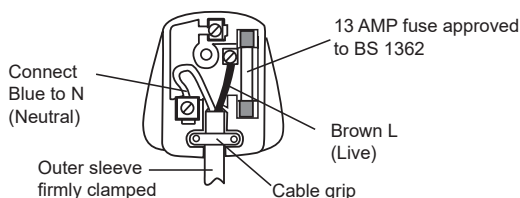
Plug replacement (for UK only)

If you need to replace the fitted plug, then follow the instructions below.

IMPORTANT: The wires in the mains lead are coloured in accordance with the following code:

Blue – Neutral Brown – Live

As the colours of the wire in the mains lead of this product may not correspond with the coloured marking identifying the terminals in your plug, proceed as follows. The wire, which is coloured blue, must be connected to the terminal, which is marked with N or coloured black. The wire, which is coloured brown, must be connected to the terminal, which is marked L or coloured red.



WARNING! Never connect live or neutral wires to the earth terminal of the plug, which is marked with E.

Only fit an approved 13 Amp BS 1363 or BS 1363/A plug and the correctly rated fuse. If in doubt, consult a qualified electrician.



NOTE: If a moulded plug is fitted and has to be removed take great care in disposing of the plug and severed cable, it must be destroyed to prevent engaging into a socket.

Repair

This product does not contain any parts that can be repaired by the consumer. Contact an authorised service centre or a similarly qualified person to have it checked and repaired.

Storage

1. Switch the product off and disconnect it from the power supply.
2. Clean the product as described above.
3. Store the product and its accessories in a dark, dry, frost-free, well-ventilated place.
4. Always store the product in a place that is inaccessible to children. The ideal storage temperature is between 10°C and 30°C.
5. We recommend using the original package for storage or covering the product with a suitable cloth or enclosure to protect it against dust.

Transportation

1. Switch the product off and disconnect it from the power supply.
2. Attach transportation guards, if applicable.
3. Always carry the product by its transportation handle (14).
4. Protect the product from any heavy impact or strong vibrations which may occur during transportation in vehicles.
5. Secure the product to prevent it from slipping or falling over.

Troubleshooting

Suspected malfunctions are often due to causes that the users can fix themselves. Therefore check the product using this section. In most cases the problem can be solved quickly.



WARNING! Only perform the steps described within these instructions! All further inspection, maintenance and repair work must be performed by an authorised service centre or a similarly qualified specialist if you cannot solve the problem yourself!

Problem	Possible cause	Solution
1. Product does not start	1.1. Not connected to power supply 1.2. Power cord or plug is defective 1.3. Other electrical defect to the product	1.1. Connect to power supply 1.2. Check by a specialist electrician 1.3. Check by a specialist electrician
2. Product does not reach full power	2.1. Extension cord not suitable for operation with this product 2.2. Power source (e.g. generator) has too low voltage 2.3. Air vents are blocked	2.1. Use a proper extension cord 2.2. Connect to another power source 2.3. Clean the air vents
3. Unsatisfactory result	3.1. Tines are dull/damaged 3.2. Tines not suitable for ground material	3.1. Replace with new one 3.2. Use product only on suitable ground
4. Excessive vibration or noise	4.1. Tines are dull/damaged 4.2. Bolts/nuts are loose	4.1. Replace with a new one 4.2. Tighten bolts/nuts

Recycling and disposal



The product comes in a package that protects it against damage during shipping. Keep the package until you are sure that all parts have been delivered and the product is function properly. Recycle the package afterwards.

WEEE symbol. Waste electrical products should not be disposed of with household waste. Please recycle where facilities exist. Check with your Local Authority or local store for recycling advice.

Guarantee

This product carries a guarantee of 24 months starting from the day of purchase. Please retain your receipt as a proof.

This guarantee specifically excludes losses due to:

- Normal wear and tear, including accessory wear
- Overload, misuse or neglect
- Failure of consumable items (such as batteries)
- Repairs attempted by anyone other than an authorized agent
- Accidental damage caused by foreign objects or substances
- Lack of routine maintenance
- Failure to follow manufacturer's guidelines
- Loss of use of the goods

Due to continuous product improvement, we reserve the right to change the product specification without prior notice.

This guarantee does not affect your statutory rights.

For any inquiries relating to the guarantee please contact your retailer: If you purchased this product in B&Q store or website then call 0333 0143101. If you bought this product in SFX outlet or website then call 03330 112 112.

Technical specifications

General

> Rated voltage, frequency	220 – 240 V~ , 50 Hz
> Rated power input	800 W
> Rated no load speed n_0	340 min ⁻¹
> Protection class	II □
> Tilling width	280 mm (4 times Ø200 mm)
> Weight	approx. 9 kg
> Dimensions	approx. 1380 x 340 x 280 mm

Sound values

> Sound pressure level L_{pA}	78.3 dB(A)
> Uncertainty K_{pA}	2.5 dB(A)
> Measured sound power level L_{WA}	91.1 dB(A)
> Uncertainty K_{WA}	2.5 dB(A)
> Guaranteed sound power level L_{WA}	93 dB(A)

Hand arm vibration values

> Hand arm vibration a_h	0.775 m/s ²
> Uncertainty K	1.5 m/s ²

The sound values have been determined according to noise test code given in EN 1553:1996, using the basic standards EN ISO 3744 and EN ISO 11094.

The sound intensity level for the operator may exceed 80 dB(A) and ear protection measures are necessary.

The declared vibration value has been measured in accordance with a standard test method (according to EN 709) and may be used for comparing one product with another. The declared vibration value may also be used in a preliminary assessment of exposure.



WARNING! Depending on the actual use of the product the vibration values can differ from the declared total. Adopt proper measures to protect yourself against vibration exposures. Take the whole work process including times the product is running under no load or switched off into consideration.

Proper measures include among others regular maintenance and care of the product and accessories, keeping hands warm, periodical breaks and proper planning of work processes.

EC declaration of conformity

WE

Kingfisher International Products B.V.
Rapenburgerstraat 175E 1011 VM Amsterdam
The Netherlands

Declare that the product
800W Tiller FPT800

Serial number: from 000001 to 999999

Complies with the essential health and safety requirements of the following
directives:

The Machinery Directive 2006/42/EC

EN ISO 12100:2010

EN 60335-1:2012+A11:2014+A13:2017+A1:2019+A14:2019+A2:2019

EN 62233:2008

EN 709:1997+A4:2009

The EMC Directive 2014/30/EU

EN 55014-1:2017

EN 55014-1:2006+A1:2009+A2:2011

EN 55014-2:2015

EN 61000-3-2:2014

EN 61000-3-3:2013

The Outdoor Noise Directive 2000/14/EC & 2005/88/EC

Measured sound power level: 91.1 dB(A)

Guaranteed sound power level: 93 dB(A)

The conformity assessment followed was according to annex V of the
directive

The RoHS Directive 2011/65/EU

Authorised signatory and technical file holder



Eric Capotummino / Group Quality Director
Date:01/09/2020

Kingfisher International Products B.V.
Rapenburgerstraat 175E 1011 VM Amsterdam
The Netherlands

In more detail...

Manufacturer, Fabricant, Producent, Producător, Fabricante:

UK Manufacturer:
Kingfisher International Products Limited
3 Sheldon Square, London, W2 6PX
United Kingdom
www.kingfisher.com/products

EU Manufacturer:
Kingfisher International Products B.V.
Rapenburgerstraat 175E
1011 VM Amsterdam
The Netherlands
www.kingfisher.com/products

EN	www.diy.com www.screwfix.com www.screwfix.ie	To view instruction manuals online, visit www.kingfisher.com/products
FR	www.castorama.fr www.bricodepot.com	Pour consulter les manuels d'instructions en ligne, rendez-vous sur le site www.kingfisher.com/products
PL	www.castorama.pl	Aby zapoznać się z instrukcją obsługi online, odwiedź stronę www.kingfisher.com/products
ES	www.bricodepot.es	Para consultar los manuales de instrucciones en línea, visite www.kingfisher.com/products
PT	www.bricodepot.pt	Para consultar manuais de instruções online, visite www.kingfisher.com/products
RO	www.bricodepot.ro	Pentru a consulta manualele de instrucțiuni online, vizitați www.kingfisher.com/products
TR	www.koctas.com.tr	Kullanım kılavuzuna internet üzerinden ulaşmak için www.kingfisher.com/products adresini ziyaret edin